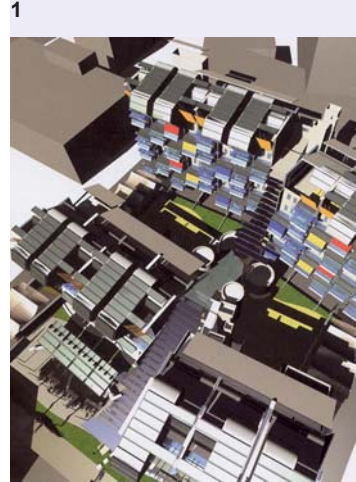
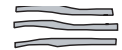


# PRECEDENT SAMPLES FOR FUTURE INVESTIGATIONS



- 1 **Pintu Merah**  
by Hully Liveris Design  
Company P/L  
Darwin, NT  
2000
- 2 **Raleigh Street  
Apartments**  
by Design Inc  
St Kilda, Victoria  
2001
- 3 **Cotton Tree Housing**  
by Kerry and Lindsay Clare  
Maroochydore, Queensland  
1996
- 4 **12-16 Challis Avenue**  
by Tonkin Zulaikha Greer  
Architects Pty Ltd  
East Sydney, NSW  
2002
- 5 **Newington Apartments**  
by HPA Architects Planners  
Interior Designers / Peddle  
Thorp & Walker  
Newington, NSW  
2002
- 6 **Ormond Road  
Townhouses**  
by Sean Godsell Architects  
Elwood, VIC  
2000
- 7 **Atlas Apartments**  
by Stanisic Associates and  
Turner Associates  
Alexandria, NSW  
2002
- 8 **St Leonards Apartments**  
by Nonda Katsalidis  
St Kilda, Victoria  
1996
- 9 **Abitare Apartments**  
by Fairweather Proberts  
Architects  
Fortitude Valley, QLD  
2003
- 10 **Mondrian Apartments**  
by Stanisic Associates  
Architects  
Waterloo, NSW  
2003
- 11 **Nuziders Apartment  
Blocks**  
by Baumschlager & Eberle  
Nuziders, Austria  
1996
- 12 **80 Renwick Street,  
Redfern**  
by Architects Johannsen &  
Associates  
Redfern, NSW  
2003
- 13 **Timber Wharf**  
by Glenn Howells Architects  
Manchester, England  
2002
- 14 **Victoria Park**  
by NSW Department Public  
Works & Services in  
association with  
Hassell and Turpin and  
Crawford Studio  
Zetland, NSW  
2003



MERRIMA DESIGN GROUP  
NSW GOVERNMENT ARCHITECT OFFICE  
LEVEL 19, MCKELL BUILDING  
2/24 BANGSON PLACE  
SYDNEY NSW 2000



NSW Department of  
Commerce

## ABORIGINAL HOUSING COMPANY PEMULWUY PROJECT

17 NOV 2004

YBE 2004

CONCEPT  
FEASIBILITY

19<sub>D</sub>